

# **Project ECHO for Interstitial Lung Disease**

**September 21, 2022**

Robert Hallowell, MD, and Aliaa Barakat, PhD

# ECHO Etiquette

---

## **Rename Zoom Display: Name, Credentials, Organization**

Introduce yourself before speaking

Mute when not speaking

Ask clarifying questions and engage in case discussion

Do not share protected health information (PHI) during session

Cultivate ECHO culture: *All learn and all teach*



# Today's Agenda

Time	Didactic Presentation/Case Discussion	Presenter/Facilitator
7:00am — 7:05am	Introduction	Aliaa Barakat, PhD Robert Hallowell, MD
7:05am — 7:25am	Didactic Presentation	Barry Shea, MD
7:25am — 8:00am	Case Presentation and Discussion	Nour Assad, MD Peter LaCamera, MD
8:00am	Closing Remarks	Arthur Dea, CCRP

**In accordance with HIPAA:** *All patient information will be de-identified during session.*



# Didactic Presentation

---

Didactic Speaker



**Barry Shea, MD**

Pulmonary and Critical Care  
Medicine

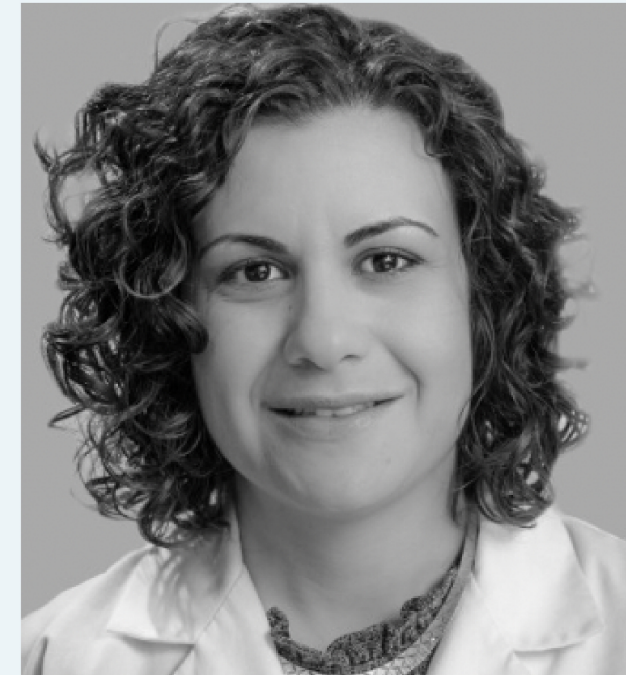
Massachusetts General Hospital

## Shifting Paradigms of IPF Pathogenesis



# Case Presentation

Case Presenter



**Nour Assad, MD**

Pulmonary and Critical Care  
Medicine

University of New Mexico

**Co-Director, Miners' Wellness ECHO**

[https://hsc.unm.edu/echo/partner-portal/  
programs/new-mexico/miners-wellness/](https://hsc.unm.edu/echo/partner-portal/programs/new-mexico/miners-wellness/)

# Case Discussion

## ECHO Expert Panel



### **Robert Hallowell, MD**

*ECHO Medical Director*

Director, Interstitial Lung  
Disease Program

Director, Pulmonary Ambulatory  
Clinic

Massachusetts General Hospital



### **Lida Hariri, MD**

Pathology

Massachusetts General Hospital



### **Peter LaCamera, MD**

Chief, Division of Pulmonary,  
Critical Care, and Sleep Medicine

St. Elizabeth's Medical Center



### **Amita Sharma, MBBS**

Thoracic Imaging and Intervention  
Division

Massachusetts General Hospital

# Program Objectives

---

Improve early detection and diagnosis of ILDs.

Improve access to ILD care and facilitate multidisciplinary ILD management.

Improve utilization of local support resources in patients' home communities.

[\*\*www.ildcollaborative.org/echo\*\*](http://www.ildcollaborative.org/echo)



# CME Accredited Series



In support of improving patient care, this activity has been planned and implemented by the Pulmonary Care and Research Collaborative, Ltd. and Project ECHO®. Project ECHO® is jointly accredited by the Accreditation Council for Continuing Medical Education (ACCME), the Accreditation Council for Pharmacy Education (ACPE), and the American Nurses Credentialing Center (ANCC), to provide continuing education for the healthcare team.



JOINTLY ACCREDITED PROVIDER™  
INTERPROFESSIONAL CONTINUING EDUCATION

## AMA Designation Statement

Project ECHO® designates this live activity for a maximum of 1.0 *AMA PRA Category 1 Credit™*. Physicians should claim only credit commensurate with the extent of their participation in the activity.





# IT / Operations Questions?

## ECHO Operations Team



**Aliaa Barakat, PhD**

*ECHO Principal Investigator*

Founder and CEO

ILD Collaborative

Pulmonary Care and Research  
Collaborative, Ltd.



**Arthur Dea, BA, CCRP**

*ECHO Project Manager*

ILD Collaborative

Pulmonary Care and Research  
Collaborative, Ltd.

[echo@ildcollaborative.org](mailto:echo@ildcollaborative.org)